

# Datasheet

## Disposable earplugs

Protection against noise



	Contours	7400
	Contours small	7403
	Spark Plugs	7800
	Spark Plugs Cord	7801
	Spark Plugs PocketPak	7802
	Orange	7500

	Pura-Fit <sup>36</sup>	7700
	Pura-Fit <sup>36</sup> to go	7705
	Pura-Fit <sup>36</sup> Cord	6900
	MelLows	7600
	Spark Plugs Detect	7809

	<b>MoldexStations</b>	
	Contours	(500 pair) 7450
	Contours small	(500 pair) 7453
	Spark Plugs soft	(250 pair) 7825
	Spark Plugs soft	(500 pair) 7850
	Pura-Fit <sup>36</sup>	(250 pair) 7725
	Pura-Fit <sup>36</sup>	(500 pair) 7750
	MelLows	(250 pair) 7625
	MelLows	(500 pair) 7650
	Spark Plug Detect	(500 pair) 7859
	Mounting bracket for Stations*	7060

### CHARACTERISTICS



#### Special foam formula

Soft comfortable material which offers stiffness when rolled for easy insertion.



#### Contours / Contours small

Extra comfortable, shape adapted to ear canal. Plug in 2 sizes.



#### Spark Plugs / Orange

Appealing colours, tapered design.



#### Pura-Fit<sup>36</sup>

Standard classic shape – bright green colour for easy compliance check.



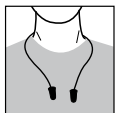
#### MelLows

Protection against lower noise levels. Designed to keep the user in touch with the environment.



#### Spark Plugs Detect

An imbedded metal ball and the detectable cord make this plug fully detectable.



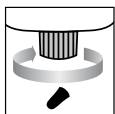
#### Cords

Allows the user to hang the plugs around the neck during breaks.



#### PocketPak

Two pairs of Spark Plugs in a practical storage container.



#### MoldexStation

Hygienic dispensing system, dispenser mechanism is automatically replaced with every refill.



#### 100% PVC-FREE

All Moldex products and packaging are completely free from PVC.

### CERTIFICATION

The Moldex range of hearing protection products meet the requirements of EN 352-2 and are CE-Marked in accordance with the requirements of European Directive 89/686/EEC. Responsible for type examination (Article 10):

Spark Plugs, Orange: FIOH (0403) Helsinki (FIN).

Pura-Fit<sup>36</sup>: INSPEC (0194) Manchester (UK).

Contours, MelLows: IFA (0121) St. Augustin (DE).

According to the German regulation BGR 194, Spark Plugs and Pura-Fit<sup>36</sup> fulfil the criteria "hearing of warning signals in general" and "speech comprehensibility".

Furthermore, Pura-Fit<sup>36</sup> fulfils the criteria "signal hearing in track-system and road traffic possible".

### ATTENUATION DATA

The Moldex range of hearing protection products passes the EN 352-2 minimum attenuation requirements. The tables below show the full attenuation data for Moldex products.

#### 7400, 7403

Freq. (Hz)	63	125	250	500	1000	2000	4000	8000
M <sub>p</sub> (dB)	22,5	29,3	36,6	41,6	38,1	35,6	44,0	43,1
s <sub>p</sub> (dB)	8,7	8,0	7,1	5,2	5,0	3,7	3,6	6,0
A.P.V (dB)	13,8	21,3	29,5	36,4	33,1	31,9	40,4	37,1

Size 7400: 6-12, 7403: 5-10 H = 34 dB M = 33 dB L = 28 dB SNR = 35 dB

#### 7800, 7802, 7801, 7500

Freq. (Hz)	125	250	500	1000	2000	4000	8000
M <sub>p</sub> (dB)	36,0	36,7	39,0	36,0	37,0	46,7	44,6
s <sub>p</sub> (dB)	6,0	6,1	6,5	5,9	4,9	3,2	3,8
A.P.V (dB)	30,0	30,6	32,5	30,1	32,1	43,5	40,8

Size: 6-12 H = 34 dB M = 32 dB L = 31 dB SNR = 35 dB

#### 7700, 7705, 6900

Freq. (Hz)	63	125	250	500	1000	2000	4000	8000
M <sub>p</sub> (dB)	34,4	34,2	35,6	36,6	37,1	37,1	46,5	43,9
s <sub>p</sub> (dB)	4,9	6,1	6,2	5,7	5,0	3,5	4,2	4,1
A.P.V (dB)	29,5	28,1	29,4	30,9	32,1	33,6	42,3	39,7

Size: 6-12 H = 35 dB M = 33 dB L = 31 dB SNR = 36 dB

\* Mounting bracket 7060 comes separately and is needed for all MoldexStations.

# Datasheet

## Disposable earplugs

Protection against noise



### 7600

Freq. (Hz)	63	125	250	500	1000	2000	4000	8000
M <sub>p</sub> (dB)	8.3	12.0	16.7	21.4	27.0	30.7	38.6	44.1
s <sub>p</sub> (dB)	5.6	5.0	6.8	6.9	5.7	5.4	7.2	6.9
A.P.V (dB)	2.7	7.0	9.9	14.5	21.3	25.3	31.4	37.2

Size: 6-12 H = 26 dB M = 18 dB L = 12 dB SNR = 22 dB

### 7809

Freq. (Hz)	63	125	250	500	1000	2000	4000	8000
M <sub>p</sub> (dB)	30,9	33,7	33,8	37,4	36,2	36,0	46,0	46,5
s <sub>p</sub> (dB)	8,1	9,8	10,0	10,2	8,6	6,4	4,5	3,8
A.P.V (dB)	22,8	23,9	23,8	27,2	27,6	29,6	41,5	42,7

Size: 7-12 H = 32 dB M = 28 dB L = 26 dB SNR = 32 dB

### MATERIALS

**Contours, Spark Plugs, Orange,**

**Pura-Fit<sup>36</sup>, Mellows:**

**Spark Plugs Detect:**

**Cord:**

**Cord Detect:**

**PocketPak:**

**MoldexStation:**

**Mounting bracket for Station:**

Polyurethane

Polyurethane, Metal (Iron)

Thermoplastic Elastomere (TPE)

TPE, Metal (Iron)

Polystyrene

Polystyrene

Polypropylene

### WEIGHT (per pair)

**Contours**

7400: 1,8 g                      7403: 1,2 g

**Spark Plugs, Orange, Mellows**

1,3 g                              with Cord: 3,1 g

**PocketPak:**

6,1 g

**Pura-Fit<sup>36</sup>, Spark Plugs Detect**

1,4 g                              with Cord: 3,2 g

### TESTING

The earplugs of the Moldex Hearing Protection range have been tested to EN 352-2 and fulfil all requirements of the relevant categories.

### Ignitability

The earplugs shall not ignite upon application of a heated rod, nor continue to glow after the removal of the heated rod.

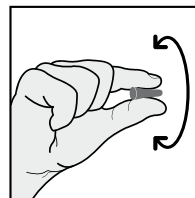
### Construction

All parts of the earplugs are designed and manufactured so that they are not liable to cause physical damage to the wearer when fitted and used according to the instructions.

### INSTRUCTIONS FOR USE

- The products must be used in accordance with the relevant national legislation.
- Warning: disregarding the instructions for use and fitting instructions for these products can affect the product efficiency in protecting against noise.
- The products should be stored in a cool, dry environment.
- The products may be adversely affected by direct contact with certain chemical substances (e.g. aromatic hydrocarbons).
- The products are for single use only.

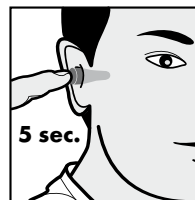
### INSTRUCTIONS FOR FITTING



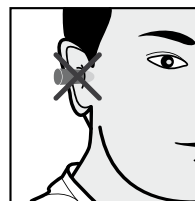
1. Roll the plugs between the finger and thumb to compress them for insertion.



2. Reach above the head and pull the ear gently upwards.



3. Slide the plug into the ear canal and hold in place for 5 seconds to let the plug expand and fill the ear.



### INFO

For help on selection and training please contact us. We offer a wide range of training packages and support material.

MOLDEX-METRIC AG & Co. KG  
Tübinger Straße 50  
72141 Walddorfhäslach  
Germany

Tel.: +49 (0) 71 27/81 01-02  
Fax: +49 (0) 71 27/81 01-48  
info@moldex-europe.com  
www.moldex-europe.com